

DIRECTA **Sendoline®**



Root canal sealer

Simple | Safe | Bio-compatible

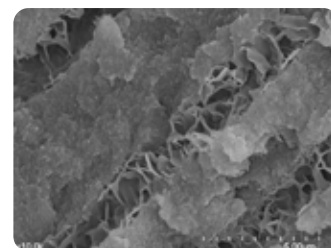
SendoSeal MTA

SendoSeal MTA is a root canal sealer designed to permanently seal the root canal. The sealer is bio-compatible and MTA-based, which means that it sets by absorbing moisture in the root canal. With its high pH value (pH 10–12), SendoSeal MTA has an excellent antibacterial effect, which helps with the healing process.

The product is supplied as a syringe of premixed material, which makes it simple to use. In studies*, SendoSeal MTA has been shown to have outstanding physical and biological properties.



SendoSeal MTA root canal sealer contributes to the formation of hydroxylapatite in the dentinal tubules.



Representative scanning electron microscope image (x1000) of gutta-percha with SendoSeal MTA.

DIMENSIONAL STABILITY AND HERMETIC SEALING

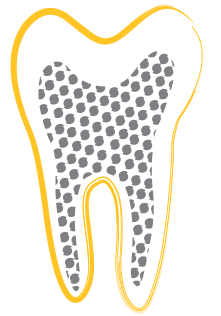
SendoSeal MTA root canal sealer is dimensionally stable and does not dissolve over time. The root canal remains sealed, protecting against the risk of any new infection.



Image is showing a cross-sectional part of a distal root of a lower first molar with an obturation of Gutta-percha and SendoSeal MTA.

*Physical properties and biocompatibility of an injectable calcium-silicate- based root canal sealer: in vitro and in-vivo study by Eun-Su Lim Young-Bae Park, Young-Sun Kwon, Won-Jun Shon, Kwang-Won Lee, Kyung-San Min och Physicochemical properties of Epoxy Resin Based and Bioceramic Based root canal sealers by Ju- Kyung Lee, Sang Won Kwak, Jung-Hong Ha WooCheol Lee, Hyon Cheol Kim

Simple, Safe and Bio-compatible



SIMPLE APPLICATION

SendoSeal MTA root canal sealer comes premixed in a syringe. The material is applied directly to the root canal with the thin cannula, which ensures smooth and simple handling.



CONTROLLED FLOWABILITY

SendoSeal MTA has outstanding flowability, making it easy to fill the entire root canal. It is easy and fast to obturate the complex root canal system.



HIGH RADIOPACITY

SendoSeal MTA has high radiopacity (≈ 9.5 AL), making it easy to distinguish the root canal filling and assess the result of the X-ray.



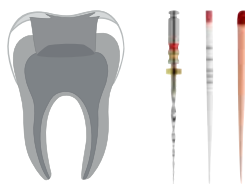
Indicator image before treatment.



12 months after treatment.

Photo with courtesy of Dr Vahid Khayyami, Specialist in Endodontics, Helsingborg, Sweden

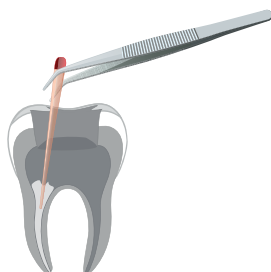
Your Step-by-Step Guide to Use



1. Prepare and rinse the root canal. Dry the root canal with paper points. Try in and select a suitable gutta-percha point.



2. Apply the SendoSeal MTA in the root canal directly using the thin cannula. Using back-fill technique, slowly withdraw the cannula while simultaneously applying the material.



3. Insert the gutta-percha point into the root canal. Use a pumping motion to disperse the material throughout the root canal. When the gutta-percha point reaches the instrumentation length, hold the gutta-percha point in place for a further one to two seconds.

4. Finally, remove the excess gutta-percha from the cavity.

REF	Product / Content
300001	SendoSeal MTA - 1 syringe SendoSeal MTA (3 g) - 20 cannulas 24 Gauge - 5 reusable white caps

Design By Dentists

Directa's products are developed, tested and evaluated by our selected team of highly-qualified and renowned Swedish and international dental professionals. The aim is to make life easier for all dental professionals in their daily clinical work.



DIRECTA AB
Finvids väg 8
194 47 Upplands Väsby, SWEDEN
+46 8 506 505 75
info@directadental.com
www.directadental.com

DIRECTA INC
64 Barnabas Road, Unit 3
Newtown, CT. 06470, USA
+1 203.491.2273
infousa@directadental.com
www.directausa.com



MARUCHI
101, Donghwagongdanro, Munmak-eup,
Wonju-si, Gangwon-do
26365, Republic of Korea
Tel: +82 33 734 0330